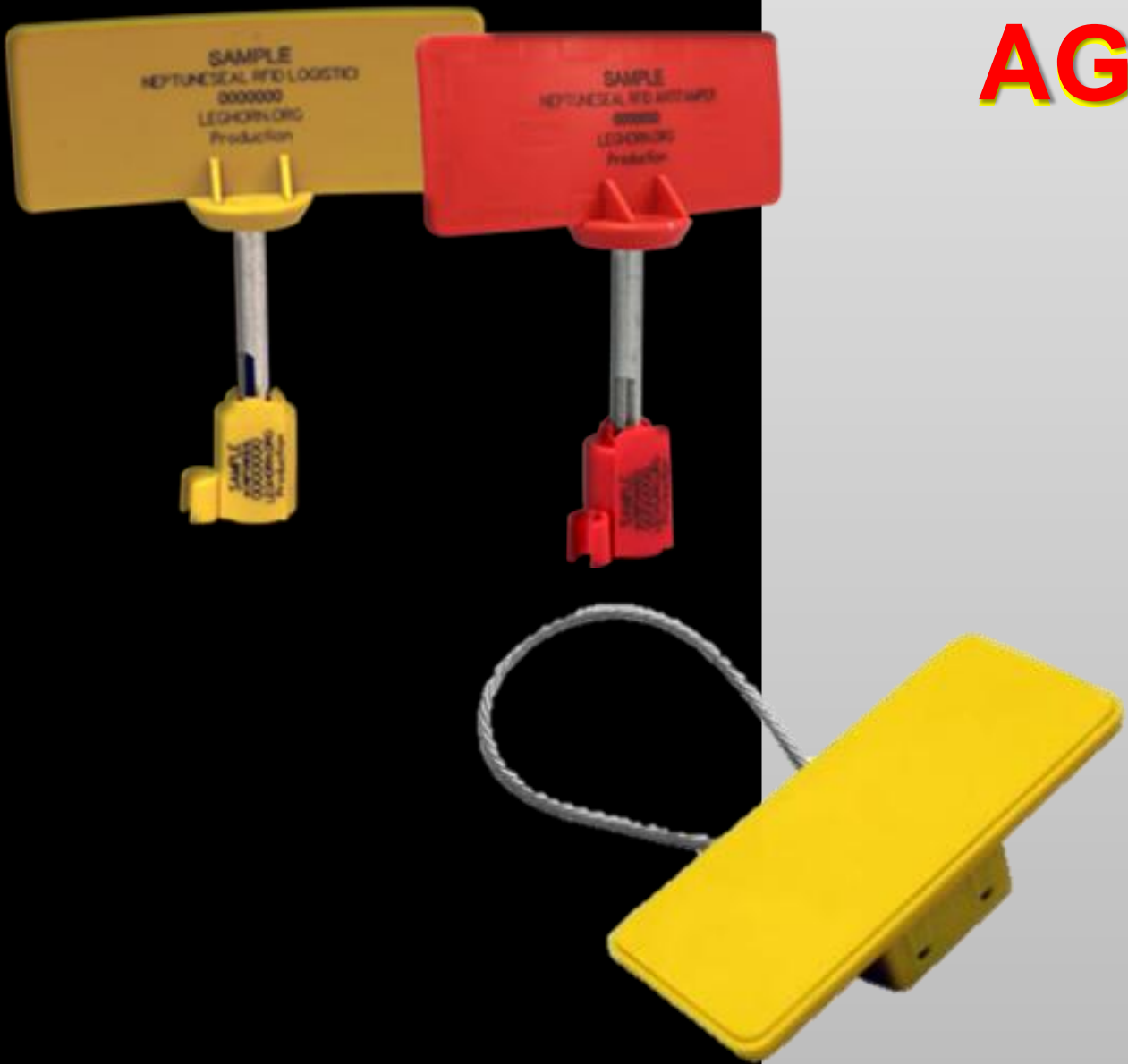


# RFID tamper evidence AGE



**PROTECTION – CONTROL – IDENTIFICATION - TRACKING**

**Protection.**

LeghornGroup can protect your goods and assets with security seals and various products for tamper protection.

The company can create bespoke, technical solutions to meet client's requirements.

**Control.**

LeghornGroup ensures goods and people can be monitored using security products and integrated complete hardware and software solutions that allow the operator to monitor and intervene in real time, even remotely.

**Identification.**

LeghornGroup's understanding of authentication along with their innovative technical products and solutions allow users to uniquely and securely identify, goods, vehicles, containers, animals and people.

**Tracking.**

LeghornGroup's real time GPS tracking devices allow users to monitor location, status and movements of vehicles and people.



# e-SEALS and e-LOCKS

from LeghornGroup  
RFID seals and electronic locks  
for a new path towards higher security and  
efficiency  
in the supply chain of logistics

## WHY USING RFID SEALS IN TRANSPORT LOGISTICS?



*«NEPTUNE RFID seals and JANUS GATE stop gate in/gate out congestion and human errors in TAS Trucks Appointment System»,*

**DP World Belgium, terminal Antwerp Gateway, says**

*Mr. Rachid Baho, Director Container Operations at DP World Belgium (AG):*

*“RFID seals are probably the ultimate solution on many discussions regarding seal checking and enhancing terminal operations. But RFID will become a real worldwide success if all terminal operators join hands by introducing this technology asap in terminal operations.”*

## WHY USING RFID SEALS IN TRANSPORT LOGISTICS?



*«Safer transports and more efficient logistics», SOLVAY says*

**TITAN SEAL:** polypropilene adjustable seal embedding UHF RFID electronic chip with unique ID.

- Used to secure tank valves in transport of chemical products
- Read out by automatic gates at production plants





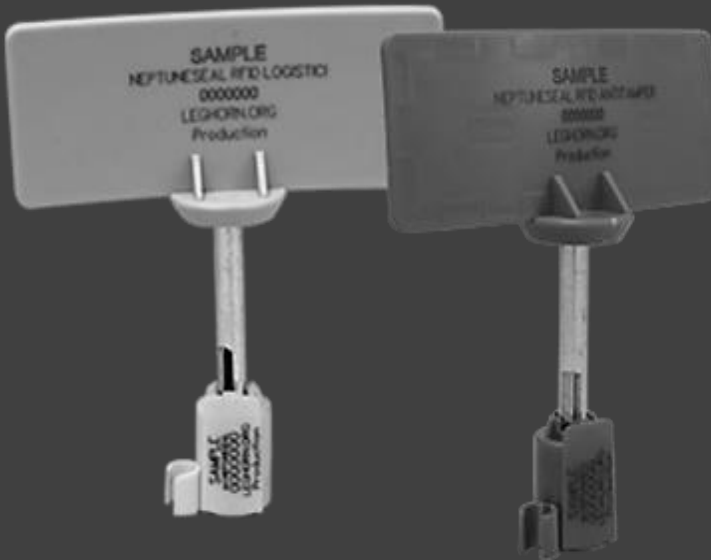
# e-SEALS – seals embedding RFID technology

(electronic chip with unique ID and antenna for automatic identification and data communication over radiofrequency) can help in:

- Process automation
- Speeding-up of operations
- Reduction of errors due to operators, with subsequent increase in process reliability
- Secure identification

- Tracking
- Tracing



**NEPTUNE SEAL**

Available in LOGISTIC and TAMPER EVIDENCE versions

- Passive UHF RFID
- ISO17712:2013
- Indication yes/no for tamper

**CABLE SEAL**

Available in LOGISTIC and TAMPER EVIDENCE versions

- Passive UHF RFID
- ISO17712:2013
- Indication yes/no for tamper

**TITAN SEAL**

Available in LOGISTIC version

- Passive HF and UHF RFID
- Plastic adjustable strip (customisable)

# UHF RFID JANUS GATE

«All-in-one» RFID UHF - ISO 18000-6 (EPC Global) system designed specifically to monitor and manage the movement of containers that pass through it (Gate IN / Gate OUT operations).

Able to monitor - in a reliable and secure way - the RFID e-seals applied to the containers that enter terminals, ports and depots, by taking an automatic and accurate reading of passive (battery-free) RFID seals.



# UHF RFID TROLLEY

Self-standing and moving-on-wheels UHF RFID read/write solution for:

- Fast and efficient inventory operations *on-the-go*
- Outdoor logistics operations, whenever it is not possible nor convenient to set fixed reading equipment (e.g. loading/unloading at harbour docks)
- Designed to work in harsh environment (industrial and outdoor)
- Wheels and handle for easy and light move across different areas










## E-LOCK GOLD

Electronic reusable lock that combines advanced security and capability for real time monitoring of location and status of trucks, trailers, and containers

- Equipped with GPS and GSM/GPRS modules
- Powered by a long lasting USB rechargeable battery
- Sends SMS alert to notify unauthorised access to goods: open, close, or tamper (device ID, GPS coordinates and time stamp)
- Easily interfaces with existing web-based tracking platforms and apps

	TYPE OF SEAL	RELIABILITY
1	 <p><b>LEAD SEALS WITH NUMBERING</b> : easy to open and close. They are used in many parts of the world.</p>	<p><b>ANY</b></p>
2	 <p><b>STRAP SEAL WITH NUMBERING</b>: are better than the previous because they have the numbering but are easy to tamper with.</p>	<p><b>LACKING</b></p>
3	 <p><b>BOLT AND CABLE SEAL WITH NUMBERING</b> : high security SEALS. Hard to tamper with. (tamper possibility on the doors of the container)</p>	<p><b>GOOD</b></p> <p><b>ISO 17712:2013</b></p>
4	 <p><b>BARRIER SEALS WITH TRIPLE NUMBERING</b>: really high security barrier seals. Low possibility of tamper both the seals and the doors of the container.</p>	<p><b>REALLY GOOD</b></p> <p><b>ISO 17712:2013</b></p>
5	 <p><b>RFID ANTITAMPER BOLT SEAL</b>. Are able to declare the status of the seal.</p> <p>NEPTUNESAL RFID ANTI TAMPER</p>	<p><b>EXCELLENT</b></p> <p><b>ISO 17712:2013</b></p>

# WORLD CONTACTS

General e-mail: [info@leghorngroup.com](mailto:info@leghorngroup.com)



**LeghornGroup** – Italy  
[www.leghorngroup.it](http://www.leghorngroup.it)

**LeghornGroup** – U.S.A.  
[www.leghorngroup.com](http://www.leghorngroup.com)

**LeghornGroup** – Belgium  
[www.leghorngroup.be](http://www.leghorngroup.be)  
[www.leghorngroup.nl](http://www.leghorngroup.nl)

**LeghornGroup** – Saudi Arabia  
[www.leghorngroup.sa](http://www.leghorngroup.sa)

**LeghornGroup** – Czech Rep.  
[www.leghorngroup.cz](http://www.leghorngroup.cz)  
[www.leghorngroup.pl](http://www.leghorngroup.pl)

**LeghornGroup** – Greece  
[www.leghorngroup.gr](http://www.leghorngroup.gr)

**LeghornGroup** – Moldova  
[www.leghorngroup.ro](http://www.leghorngroup.ro)

**LeghornGroup** – Spain  
[www.leghorngroup.es](http://www.leghorngroup.es)



LeghornGroup srl  
 34/36, Via degli Arrotini - 57121 Livorno Tuscany Italy  
 Ph: +39 0586 406376 - Fax:+39 0586 407621  
[www.leghorngroup.com](http://www.leghorngroup.com) - [info@leghorngroup.com](mailto:info@leghorngroup.com)

**PROTECTION- CONTROL - IDENTIFICATION - TRACKING**